

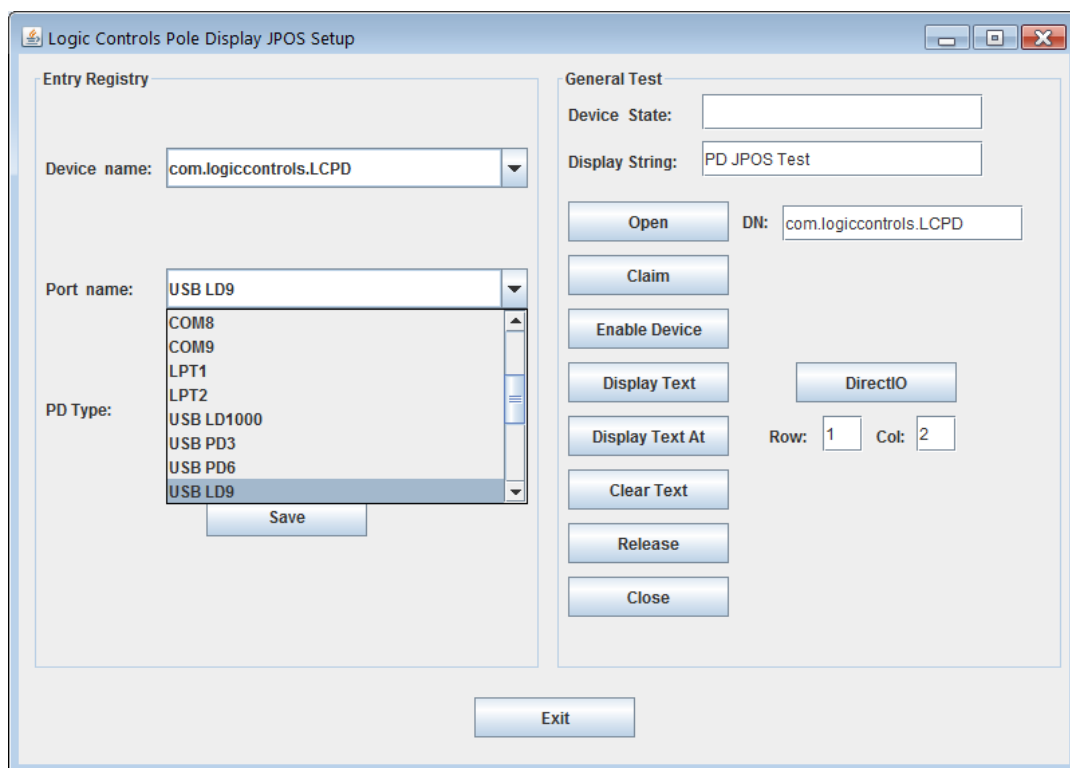
Logic Controls / Bematech Line Display JavaPOS Setup Instruction

Installation

1. Java JS2E version 1.4.2_01 SDK or JRE must be installed first.
2. If there are previous versions Logic Controls / Bematech line display JPOS drivers installed, uninstall it first.
3. To install the driver, run the executable file "PDJposInstall.exe" in the "win32" or "win64" folder of the installation package depending on the Windows version of your system.
4. Restart the computer. This step is necessary for the driver to work correctly.
5. The display JPOS setup program should be installed to Start menu "Bematech Pole Display JPOS" folder.

Setup/Test

1. To work with USB displays, USB driver must be installed first and display is connected before running the following steps.
2. In Start menu - All Programs, click the "Bematech Pole Display JPOS" folder and click on the program "Bematech PD JPOS".
3. Select the appropriate port name according to the hardware connection. For USB displays, select "USB" ports for corresponding models or the virtual COM port name as indicated in Device Manager.



4. Click "Save" button to save settings.
5. The right part on program window is for a simple display test to verify that the settings are correct. Click on the buttons "Open", "Claim" and "Enable Device" in sequence to initiate the connection to the display. Check the "Device Status" box is showing the correct status at each stage.
6. Click on buttons "Display Text", "Display Text At" and "Clear Text" to check that the string showed in "Display String" text box is being displayed on the line display correctly.
7. Click "Release" and "Close" to finish the test. Click "Exit" to quit the program.
8. Set up POS software to work with the correct Device Name as shown in the PD JPOS Setup program.